

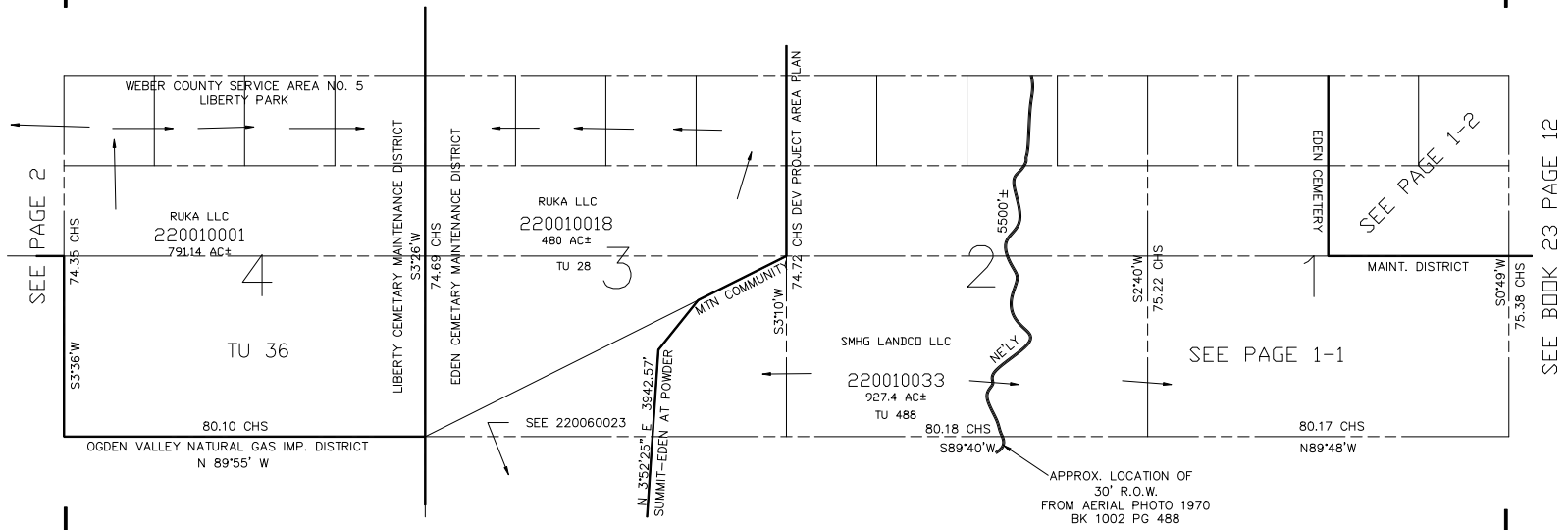
SECTIONS 1,2,3 & 4, T.7N., R.1E., S.L.B. & M.

IN WEBER COUNTY

SCALE 1" = 1320'

TAXING UNIT: 28, 36, 488

SEE BOOK 23 PAGE 44



SEE PAGE 2

SEE PAGE 1-2

SEE PAGE 1-1

SEE BOOK 23 PAGE 12

SEE PAGE 6